

1. Plug the power cord into the power outlet. Do not use the appliance if the power cord is damaged.

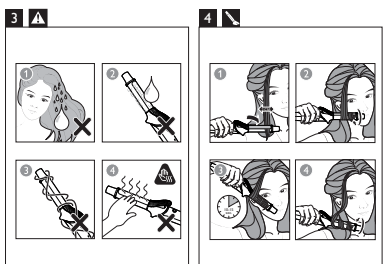


2. Plug the power cord into the power outlet. Do not use the appliance if the power cord is damaged.

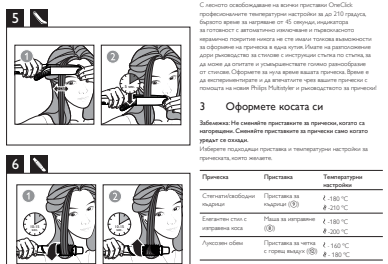
Do not use the appliance if the power cord is damaged. Do not use the appliance if the power cord is damaged.



3. Plug the power cord into the power outlet. Do not use the appliance if the power cord is damaged.



4. Plug the power cord into the power outlet. Do not use the appliance if the power cord is damaged.



5. Plug the power cord into the power outlet. Do not use the appliance if the power cord is damaged.

Do not use the appliance if the power cord is damaged. Do not use the appliance if the power cord is damaged.

Specifications are subject to change without notice. © 2017 Koninklijke Philips N.V. All rights reserved.

English

1. Avoid the main cord from coming into contact with the hot parts of the appliance. Keep the appliance away from flammable objects and material when it is switched on.

2. Do not use the appliance if the power cord is damaged. Do not use the appliance if the power cord is damaged.

3. Do not use the appliance if the power cord is damaged. Do not use the appliance if the power cord is damaged.

4. Do not use the appliance if the power cord is damaged. Do not use the appliance if the power cord is damaged.

5. Do not use the appliance if the power cord is damaged. Do not use the appliance if the power cord is damaged.

6. Do not use the appliance if the power cord is damaged. Do not use the appliance if the power cord is damaged.

7. Do not use the appliance if the power cord is damaged. Do not use the appliance if the power cord is damaged.

8. Do not use the appliance if the power cord is damaged. Do not use the appliance if the power cord is damaged.

9. Do not use the appliance if the power cord is damaged. Do not use the appliance if the power cord is damaged.

10. Do not use the appliance if the power cord is damaged. Do not use the appliance if the power cord is damaged.

11. Do not use the appliance if the power cord is damaged. Do not use the appliance if the power cord is damaged.

12. Do not use the appliance if the power cord is damaged. Do not use the appliance if the power cord is damaged.

13. Do not use the appliance if the power cord is damaged. Do not use the appliance if the power cord is damaged.

14. Do not use the appliance if the power cord is damaged. Do not use the appliance if the power cord is damaged.

15. Do not use the appliance if the power cord is damaged. Do not use the appliance if the power cord is damaged.

16. Do not use the appliance if the power cord is damaged. Do not use the appliance if the power cord is damaged.

17. Do not use the appliance if the power cord is damaged. Do not use the appliance if the power cord is damaged.

18. Do not use the appliance if the power cord is damaged. Do not use the appliance if the power cord is damaged.

19. Do not use the appliance if the power cord is damaged. Do not use the appliance if the power cord is damaged.

20. Do not use the appliance if the power cord is damaged. Do not use the appliance if the power cord is damaged.

21. Do not use the appliance if the power cord is damaged. Do not use the appliance if the power cord is damaged.

22. Do not use the appliance if the power cord is damaged. Do not use the appliance if the power cord is damaged.

23. Do not use the appliance if the power cord is damaged. Do not use the appliance if the power cord is damaged.

24. Do not use the appliance if the power cord is damaged. Do not use the appliance if the power cord is damaged.







